

## April Annual Meeting Narragansett Bay SAMP

Tuesday, April 16, 2019 at 6:30 p.m.

At our April Annual Meeting, Jennifer McCann of the [University of Rhode Island Coastal Resources Center](#) and [Rhode Island Sea Grant](#) will discuss the [Narragansett Bay Special Area Management Plan \(NBAY SAMP\)](#). The SAMP is a regulatory tool of the [Rhode Island Coastal Resources Management Council](#) and is an opportunity for the people who rely on the Bay for economic, environmental and social resources - including recreation and tourism - to have a voice in how we use this Rhode Island treasure so it can be wisely managed for generations to come. The election of club officers will precede the presentation.



Newport Bridge from the Dumplings

Our Annual Meeting will be held at the [Kayak Centre](#) at 70 Brown Street in Wickford Village. The Kayak Centre is a longtime RICKA partner that provides high quality programs and a large selection of boats and other gear. RICKA members also receive special discounts through our Member Discount program. See the [RICKA website](#) for details.

### Directions to the Kayak Centre in downtown Wickford:

**From points north** - Rte 95 South to Rte 4 South to Rte 102 South (Exit 5a). Turn left on Rte 1A. Store will be on your left.

**From points south** - Rte 95 North to Rte 102 South (Exit 5). Turn left on Rte 1A. Store will be on your left.

**For GPS**, use the address **70 Brown Street, North Kingstown, RI 02852**. The GPS will not pick up Wickford as a town.

## Flatwater Planning Meeting

Saturday, April 7, 2019 at 12:30 p.m.

Join us at Visitor Center at River Bend Farm in Uxbridge, MA for our annual [Flatwater Planning Meeting](#). At this meeting, we will set up our calendar for the 2019 year, so please bring ideas for trips. If you would like to lead a trip but do not have experience, we will partner you up with an experienced leader. If you need a specific date due to tides or other considerations, we can reserve that date for you in advance of the meeting. We will have party pizza and soda; you may bring a snack or dish to share if you wish. The Visitor Center is located at 287 Oak Street, Uxbridge, MA.

Contact Cheryl Thompson at [stonefoxfarm@juno.com](mailto:stonefoxfarm@juno.com) for additional information.

## Vote for Club Officers at the April Annual Meeting

Tuesday, April 16, 2019 at 6:30 p.m.

The Nominating Committee has presented the following slate of officers for the 2019 to 2020 year:

**President:** Pat (Mayhew) Lardner

**Vice President:** Danny O'Shea

**Secretary:** Skye Pechie

**Treasurer:** Andy Viera

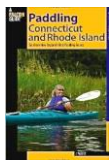
Members are encouraged to attend the April Annual Meeting to cast their votes. Contact Erik Eckilson at [eckilson@cox.net](mailto:eckilson@cox.net) or Cheryl Thompson at [stonefoxfarm@juno.com](mailto:stonefoxfarm@juno.com) with any questions.

From the RICKA Library

## Local Paddle Guides

### Paddling Connecticut and Rhode Island Southern New England's Best Paddling Routes

By Jim Cole



This is the NEW classic guide to Southern New England's waterways by our own Jim Cole. From flatwater and tidal rivers to wilderness trips, easy whitewater, and coastal and open water expeditions, this guidebook describes thirty-one trips that encompass Connecticut's greatest watersheds and nearly every river that can be paddled in Rhode Island. Whether you use your canoe or kayak to fish, hunt, bird watch, or just relax and enjoy the outdoors, you'll find plenty of locations in this guide that are just right for you.

### Paddling Southern New England 30 Canoe Trips in MA, RI and CT

By Ken Webber



This is the original classic guide to paddling the waters of southern New England. Chapters include day trips on flatwater, selected whitewater runs, and suggestions for overnight trips—with 30 trips in all, there's something here for every level of paddler. Each chapter includes information on put-ins and take-outs, distance, water conditions, dams and rapids, portages, what time of year to paddle, and what you'll see along the way. A detailed map and a handy mileage chart for each river make planning easy.

These are just two of the great books, tapes and DVD's covering the range of paddling topics that are available in our [collection](#). If you would like to check out these or any other selections, contact Bill Hahn at [librarian@ricka.org](mailto:librarian@ricka.org). Library selections can be mailed to you with a postage paid return mailer provided at no cost to the borrower.

## RICKA is an ACA



## Paddle America Club

### Executive Board:

The next Executive Board meeting will be held on April 3<sup>rd</sup> at 7:00 p.m. at the [REI Cranston Store](#), 22 Chapel View Boulevard, Cranston. All are welcome to attend.

### Newsletter Editor:

Erik Eckilson  
11 Diana Drive  
Woonsocket, RI 02895  
Email: [editor@ricka.org](mailto:editor@ricka.org)

### Membership:

Sharon Dragon  
P.O. Box 184  
Hope Valley, RI 02832  
Email: [membership@ricka.org](mailto:membership@ricka.org)

The **Paddler** is published monthly except December by the Rhode Island Canoe & Kayak Association, Inc.

Your RICKA membership expired on March 31, 2019...

## Please renew your RICKA membership now!

Please visit the website at:

<http://www.ricka.org/Join/JointheFun.html>

You can renew by mail, or online using PayPal.

## Rhode Island Canoe & Kayak Association

### Executive Board

**President:** Sharon Dragon .....401-225-3942.....[membership@ricka.org](mailto:membership@ricka.org)  
**Vice President:** Pat (Mayhew) Lardner ..401-524-8057..... [pslardner@gmail.com](mailto:pslardner@gmail.com)  
**Secretary:** Skye Pechie .....401-647-0074..... [scitamb.2@juno.com](mailto:scitamb.2@juno.com)  
**Treasurer:** Andy Viera.....774-218-5731.....[andyv51@hotmail.com](mailto:andyv51@hotmail.com)

### Members at Large:

Mike Bussell.....401-568-8605.....[canoedad@cox.net](mailto:canoedad@cox.net)  
Peter Hill .....508-366-6381..... [peter.kayaker@yahoo.com](mailto:peter.kayaker@yahoo.com)  
Sean Murphy .....401-206-7829 ..... [sean026@hotmail.com](mailto:sean026@hotmail.com)  
Danny O'Shea .....401-527-3447..... [doshea5031@aol.com](mailto:doshea5031@aol.com)  
Marty O'Loughlin .....508-336-9592..... [maopao@comcast.net](mailto:maopao@comcast.net)  
Gary Powers .....401-743-3729..... [garpow28@aol.com](mailto:garpow28@aol.com)

**Conservation:** Ric Souza .....508-572-3095 ..... [rj\\_salty@yahoo.com](mailto:rj_salty@yahoo.com)  
**Flatwater:** Cheryl Thompson .....401-497-5887..... [stonefoxfarm@juno.com](mailto:stonefoxfarm@juno.com)  
**Librarian:** Bill Hahn.....401-524-1612..... [librarian@ricka.org](mailto:librarian@ricka.org)  
**Safety & Education:** Bill Luther.....401-527-4126..... [williamluther058@gmail.com](mailto:williamluther058@gmail.com)  
**Sea Kayak:** Carleen McOsker.....508-636-0546..... [Carleenmco@gmail.com](mailto:Carleenmco@gmail.com)  
**Webmaster:** Cheryl Thompson .....401-497-5887..... [stonefoxfarm@juno.com](mailto:stonefoxfarm@juno.com)  
**Whitewater:** Andy Viera.....774-218-5731..... [andyv51@hotmail.com](mailto:andyv51@hotmail.com)  
**Wilderness:** Chuck Horbert .....401-418-2838..... [chorbert13@gmail.com](mailto:chorbert13@gmail.com)



# It's Time to Renew your Membership

You'll be supporting Rhode Island's oldest and largest paddle sports club

For 42 years, the [Rhode Island Canoe & Kayak Association](#) (RICKA) has been providing great paddling opportunities for its members. We are the oldest and largest paddle sport club in Rhode Island. **A new membership year begins on April 1<sup>st</sup>, so please join or renew your membership today.**

Why should you join RICKA? Let's start with the trips. Each year RICKA organizes hundreds of trips ranging from easy daytrips to weeklong excursions. Whether you paddle a canoe or kayak, there is trip for every interest and skill level at RICKA.

Are you looking to improve your paddling skills? Training is also an important part of the RICKA mission. Each year RICKA offers many fun and informative training sessions. Many of these sessions are



Join RICKA and be part of the fun!

offered free of charge, or at a significant discount to our members.

In addition to trips and training, we produce eleven monthly issues of our outstanding newsletter the [Paddler](#), hold [monthly meetings](#) with interesting and informative speakers, and maintain the [websites](#), [Facebook page](#), and message boards that keep you up-to-date on trips

and activities. Our [library](#) also includes an extensive collection of paddling books and videos covering all aspects of paddling.

Do you need to buy or sell boat? You should check out the [RICKA Classified Ads](#) on our website and in the Paddler. If you can't find what you need there, RICKA members also get special discounts at several area retailers (see the website).

So, if you like what we do, but are not a RICKA member, please join today - its just \$15 for the entire family. If you are a RICKA member, please renew your membership now. Memberships run from April 1, 2019 to 2020. You can join the club or renew your membership online using PayPal at:

<http://www.ricka.org/Join/JointheFun.html>.

For additional information you can contact Sharon at [membership@ricka.org](mailto:membership@ricka.org). **Please join today and support your club!**



## 2019 Membership Application/Renewal

(Please submit one form per family)

New members complete entire application.

Renewal members fill in ONLY your NAME and any NEW information.

RICKA DUES (with email newsletter) = \$15 ☐

BVPC DUES (Blackstone Valley Paddle Club) add \$10 ☐ (RICKA membership is also required)

Total ☐

Enclose your check and mail to: RICKA, P.O. Box 184, Hope Valley, RI 02832

Name Adult 1 (primary) \_\_\_\_\_

Name Adult 2 (spouse, significant other) \_\_\_\_\_

Address \_\_\_\_\_

City \_\_\_\_\_ State \_\_\_\_\_ Zip Code \_\_\_\_\_ - \_\_\_\_\_

Phone 1 (\_\_\_\_\_) \_\_\_\_\_ - \_\_\_\_\_ Home/Cell/Work Phone2 (\_\_\_\_\_) \_\_\_\_\_ - \_\_\_\_\_ Home/Cell/Work

Email 1 \_\_\_\_\_ @ \_\_\_\_\_ Email 2 \_\_\_\_\_ @ \_\_\_\_\_

Interest(s): Flatwater ☐ Sea Kayak ☐ Whitewater ☐ Surfing ☐ Wilderness ☐ Geocaching ☐

Are you willing to volunteer for club activities? Picnic ☐ Newsletter ☐ Trip Leader ☐ Other: \_\_\_\_\_

You can also renew your membership online using PayPal at <http://www.ricka.org/Join/Jointhefun.html>

---

## Interest Group Q&A

# Paddling with RICKA Flatwater

### What is the RICKA Flatwater group?

RICKA has four interest groups – [Flatwater](#), [Whitewater](#), [Sea Kayak](#) and [Wilderness](#). These groups often overlap and many members paddle regularly with all four groups. The Flatwater group is the largest of the four and holds trips on most weekends from late spring through fall.

### What types of trips are there?

Flatwater trips run the gamut from lakes and ponds, to rivers, to open water. Swimming, picnicking, and short hikes accompany some trips.

### How do I find out about trips?

You will find a list of trips on the flatwater website.

<http://www.ricka-flatwater.org/rickaschedule.htm>

You can also join the flatwater email list to get email notifications.

[http://groups.yahoo.com/group/RICKA\\_FLATWATER/join](http://groups.yahoo.com/group/RICKA_FLATWATER/join)

### Who runs the trips?

All trips are run by volunteer trip coordinators. These coordinators will have done the trip before and will be able to advise you of potential hazards. Safety is always of paramount importance, but you, and you alone, are responsible for yourself.

### What equipment do I need?

Every paddler will need a boat (canoe or kayak) that is appropriate for the conditions, paddle and personal floatation device (PFD). Your PFD must be zipped, buckled and properly adjusted anytime that



Summer day on a RICKA flatwater trip

you are on the water. You can find a list of other equipment on the website.

<http://www.ricka-flatwater.org/kayakgear.htm>

### What about clothing?

Paddling is a water sport, so you should plan to get wet. Cotton cloths should be avoided. Polypropylene, fleece, wool, and lycra blends insulate well when wet. In colder weather, a neoprene wetsuit is a better insulator, and splash jackets and dry wear are good investments.

### And for my feet?

Footwear should protect your feet in and out of the water. Sneakers, water shoes or heavy Teva-type sandals are recommended.

### How do I join a trip?

Most flatwater trips are “show and go” requiring no advanced notice. Simply arrive at the time indicated and enjoy the trip. More difficult trips will require an RSVP.

Please note that the trip coordinator may cancel a trip or change its location as conditions warrant. When possible, cancellations and changes will be posted on the [message board](#) at least 2 hours in advance the scheduled launch.

### What should I do to prepare for a trip?

Paddlers should research the trip in advance to make sure that it is right for them. The trip coordinator will often post basic information such as the length of the trip, the equipment that is needed, and the hazards that might be encountered. There are also a number of excellent paddle guides in the [RICKA Library](#).

Please be honest about your abilities when deciding to attend a trip. New paddlers should start with short, easy trips before attempting longer, more difficult ones. All flatwater paddlers need to be in good physical condition and be competent swimmers.

### What will happen when I get to the put-in?

Please arrive early for the trip, and bring the right equipment. Paddlers should not launch until the trip coordinator gives a brief safety talk, and takes a head count of paddlers. The trip coordinator may also need to assign a lead boat and a sweep boat. Please wait for the trip coordinator to launch their boat, or give the OK for you to launch.

### What will happen on the water?

On the water, all paddlers are expected to stay with the group at all times. You should always paddle behind the lead boat, and in front of the sweep boat if one has been assigned. If you need to leave the trip for any reason, please notify the trip coordinator. At the take out, please do not leave the parking lot until the trip coordinator has taken a final head count.

### Do you offer training?

The RICKA Flatwater group occasionally holds flatwater training for new paddlers. In these classes, paddlers learn the basic strokes and maneuvers to control their boats on flatwater. They can also practice wet exits and basic recoveries. Watch the website for additional information on this year's training sessions.



# Wood-Pawcatuck designated as a National Wild and Scenic River

On March 12, 2019, President Donald Trump signed the Natural Resources Management Act, which includes a provision authored by [Senator Jack Reed](#) to designate 110-miles of the Wood-Pawcatuck watershed as part of the National Wild and Scenic Rivers System – the first river system in Rhode Island to receive this prestigious national designation.

The [National Wild and Scenic Rivers System](#) was created in 1968 to preserve rivers with outstanding natural, cultural, and recreational value for the enjoyment of present and future generations. Included in the Wood-Pawcatuck designation are sections of seven rivers including the [Beaver](#), [Chipuxet](#), [Green](#), [Fall-Ashaway](#), [Pawcatuck](#), [Queen - Usquepaugh](#), [Shunock](#), and [Wood](#).

*“These stretches of rivers support a lot of wildlife and they are critical to our communities. Securing the federal Wild*

*and Scenic designation is a win for Rhode Island and will help preserve the entire watershed and help more federal conservation funds flow to the state”* said Senator Reed, the author of the Wood-Pawcatuck Watershed Wild and Scenic River Act.

[Senator Sheldon Whitehouse](#) added *“this special status will help protect the pristine rivers and tributaries of southwestern Rhode Island for generations to come.”*

***“This special status will help protect the pristine rivers and tributaries of southwestern Rhode Island for generations to come.”*** - Senator Sheldon Whitehouse

The Wood-Pawcatuck Watershed Wild and Scenic River Act was included in the larger Natural Resources Management Act - a bipartisan public lands package that will protect 1.3 million acres of wilderness, and create 2,600 miles of new national trails, and 620 miles of new scenic rivers.

*“This is a significant victory for Rhode Island that would not have been possible without the dedication of our local advocates who worked tirelessly to make this designation a reality,”* said [Congressman Jim Langevin](#). *“After years of hard work at the local, state and federal levels, we are taking a firm step to preserve the beauty and ecological value of the Wood-Pawcatuck waterways for generations to come.”*

Since 2010 the [Wood-Pawcatuck Watershed Association](#) and its partners have been working to gain national recognition for these seven rivers that offer

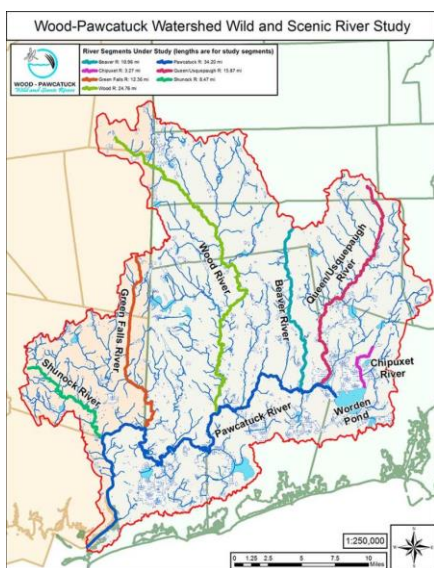


extensive habitat for wildlife, and exceptional recreational opportunities for paddlers, birders, fisherman, and anyone who enjoys scenic waterways.

Kassi Archambault, Wild and Scenic Rivers Coordinator at the Wood-Pawcatuck Watershed Association, credited her predecessor Denise Poyer and the [Wood-Pawcatuck Wild and Scenic Rivers Study Committee](#) with developing the stewardship plan that is the basis for this designation. The committee was established in late 2015 with representatives from twelve towns in Rhode Island and Connecticut.

*“For three years, Denise and the committee studied seven local rivers to make sure they are worthy of this prestigious national designation,”* Archambault said. *“They authored the [Wood-Pawcatuck Wild and Scenic Rivers Stewardship Plan](#). All twelve local municipalities adopted the stewardship plan and recommended the rivers earn national designation as Wild and Scenic Rivers.”*

The National Wild and Scenic Rivers System is notable for safeguarding the special character of designated rivers, while also recognizing the potential for their appropriate use and development. Currently, less than one-quarter of one percent of the nation's rivers have received this prestigious national designation.



## Before you Paddle...

Educate yourself about the area in which you will be paddling, and carry appropriate gear, clothing, water, food, etc. Always check the weather forecast before launching. **YOU ALONE ARE RESPONSIBLE FOR MAKING THE DECISION TO LAUNCH YOUR BOAT.**

## Flatwater Trips

Check the [Flatwater Message Board](#) for ad-hoc trips and hikes. Appropriate skills and equipment are required.

### Flatwater Planning Meeting April 7, 2019 from 12:30 to 3:00

Join us at Visitor Center at River Bend Farm in Uxbridge, MA for our annual [Flatwater Planning Meeting](#).

At this meeting, we will set up our calendar for the 2019-year, so please bring ideas for trips. If you would like to lead a trip but do not have experience, we will partner you up with an experienced leader. If you would like to lead a trip, but cannot attend the meeting, we can reserve a date in advance of the meeting. We will have party pizza and soda; you may bring a snack or dish to share, if you wish. The Visitor Center is located at 287 Oak Street, Uxbridge, MA.

Contact Cheryl Thompson at [stonefoxfarm@juno.com](mailto:stonefoxfarm@juno.com) for additional information.

### 2019 Adirondacks Trip August 3 to 10, 2019

We will be camping at Lake Eaton Campground in the Adirondacks for our 2019 summer camping and paddling trip.

Lake Eaton Campground is a beautiful campground with spacious sites and good

bathroom facilities. It is also within an hour's drive of many prime-paddling destinations. You can make campground reservations now at [Reserve America](#). Please try to select a site in the 40's and 50's or other sites close by. An organizational meeting will be held in the spring to discuss trips.

Contact Henry at [hdziadosz@verizon.net](mailto:hdziadosz@verizon.net) to be included on the invite list.

### RICKA Scholarship to ACA River Kayak Trip Leader Training May 17 - 19, 2019

[Wood-Pawcatuck Watershed Association](#) will be hosting an [ACA River Kayak Leader](#) certification class on May 17<sup>th</sup> to 19<sup>th</sup>. The course will provide the skills needed for leaders to lead day trips in calm water environments. The regular cost is \$450 per person, but **RICKA will provide a \$225 scholarship** to 4 members who agree to lead at least 2 RICKA trips in the coming year.

Please contact Pat Lardner at [pslardner@gmail.com](mailto:pslardner@gmail.com) to apply.

## Sea Kayak Trips

Sea Kayak trips are now posted in the Show and Go Section of the [Sea Kayak Message Board](#). Appropriate skills and equipment are required.

### Sea Kayak Potluck/Planning Party May 4, 2019 at 3:00 (Rain date May 5, 2019)

Paddle in the Westport area followed at 3:00 by a potluck and planning meeting at the home of Carleen McOsker, 75 Drift Road, Westport, MA. All are welcome to attend and meet fellow sea kayakers. Details to follow shortly. Save the date!

## Thanks to Gary for three great RICKA Rolling and Rescue Sessions

RICKA would like to thank Gary Branch for organizing this year's RICKA Rolling and Rescue sessions at the South County YMCA. The sessions provided a great opportunity for members to practice these important skills. Thanks Gary.



Gary works with Pat at the January session

## Come celebrate our new Wild and Scenic Rivers

April 8, 2019 at 10:30am

Join the [Wood-Pawcatuck Watershed Association](#), municipal and congressional leaders, and members of the stewardship council as we celebrate the designation of the new "Wood-Pawcatuck Wild and Scenic Rivers" (see page 5).

We will meet at the Wood River Access in the Arcadia Management Area - 2224 Ten Rod Road, Exeter, RI 02822 (41° 34.375' N, 71° 43.259' W).

For additional information or to RSVP, please contact to Kassi Archambault, at [kassi@wpwa.org](mailto:kassi@wpwa.org) or call 401-539-9017.

---

# RICKA Classifieds

Classified ads free for RICKA members and are printed here on space-available basis. Please see the [website](#) for the complete list.

- **2008 Wilderness Tsunami 120 Duralite** - 12' Long, 25.5" Wide, 53 lbs., 275 lbs. Capacity, Polyethylene, Excellent Condition. \$495. **2008 Wilderness Tsunami 140 Duralite** - 14' Long, 24" Wide, 55 lbs., 300 lbs. Capacity, Polyethylene, Excellent Condition. \$595. Both are Lime Color, Phase 3 AirPro Adjustable Seat, Adjustable & Padded Thigh Braces, SlideLock XL Adjustable Foot Braces, Fore & Aft Bulkhead Storage Compartments, Bungee Deck Rigging, Carry Handles, Top Deck Drain Plugs, Water Bottle Holder, Stored Indoors. Contact [bruce@britvideosystems.com](mailto:bruce@britvideosystems.com) 401-334-1422
- **High performance paddle board** - approximate retail value of \$2K, offered @ \$900. **Valley Pintail** - if new, approximately \$4,500 This one in excellent condition; Asking 2,30. **Necky Gliss** - is new. A great value, offered @ \$1,240. Available for viewing on the East Side of Providence [rogernc@mac.com](mailto:rogernc@mac.com) or cell 401-339-4068
- **P&H Scorpio LV (2009)** - 16'7" Beam 22", custom cockpit with foam sacral block instead of back band, foam foot rest, and foam under-deck thigh pad (have original thigh braces and foot pegs for re-installation if desired). Boat is in very good condition. Always stored in garage. \$675.00 OBO. **Valley Aquanaut (2005)** - 17'7" Beam 22". The boat is very good to excellent condition. Foam sacral block instead of back band, new front and rear hatch covers. Always stored in garage. \$1,275.00 OBO. Will also consider a trade for right boat. Contact [Fred at g33zr@gmx.com](mailto:Fred at g33zr@gmx.com) or text 401-569-6038
- **NRS farmer John wet suit**, small, \$50.00; **Kokatat paddle jacket**, small, royal blue, \$30.00; **EMS paddle gloves**, small, \$10.00; **NRS booties**, size 6, very good condition, \$15.00. **Men's Hydroskin G2 Titonium neoprene short-sleeve shirt**. \$15.00; **Men's PDF 36-44"** \$20.00; **Women's PDF 30-36"** \$20.00. For more info, contact [Fred at g33zr@gmx.com](mailto:Fred at g33zr@gmx.com) or text 401-569-6038
- **QCC500** - Fiberglass, length/width: 16' 10" x 23" cockpit: 30" x 16" yellow/white, nice stable boat. Comes with full-zip custom canvas cover and storm paddle. New skeg & cable. \$1,200 firm. **QCC700** - carbon kevlar, length/width: 18.0' x 21" cockpit: 30" x 16" Used 3 times, stored indoors, perfect condition. Includes cockpit cover; extremely fast. \$3000. Contact 401.480.7799
- **Necky Looksha IV** - 17' long x 22" wide, polyglass. Fore & aft hatches, rudder, some poly dings repaired, new keel strip; double hard chines & rockered hull. About 54 pounds. \$1500 OBO. Located in East Bay area. [kayakjmj@yahoo.com](mailto:kayakjmj@yahoo.com)
- **P & H Cetus HV** - 2017 boat, used approximately six times, as new, 18'3" x 22" 5", expedition lay-up, wide seams, keel strip, team graphics, compass, custom cockpit foam including sacral block and footrest, \$3000.00, call Tim at 401-783-6287 before 9 p.m.
- **Shearwater stitch and glue kayak** designed by Erik Schade. Extremely sea worthy 17' by 22" greenland style with keyhole cockpit, foot pegs, carbon epoxy on hull (limits scratches) and front and back hatches with bulkheads - \$1,400. [aikijerry@gmail.com](mailto:aikijerry@gmail.com)
- **Snapdragon neoprene kayak skirt** - excellent condition. Cockpit size large- 18 wide x 33-35 length. Tunnel size small. 28-30 inches circumference - \$50.00 [welcomelacefarm@yahoo.com](mailto:welcomelacefarm@yahoo.com)
- **Beautiful handmade wooden kayak with wooden paddle** - Wood Duck 12 Hybrid from Chesapeake Light Craft. Fiberglass/epoxy so no maintenance required. You need to see it. \$1500. [petemeboy@gmail.com](mailto:petemeboy@gmail.com)
- **Valley Skerry RM sea kayak**- 17' x 23". Bought new in 1994, well maintained. Skeg, ocean cockpit (slightly longer than the original ocean cockpit). The sealed bulkheads are 100% watertight, unlike any other bulkheads in my experience. Includes nylon sprayskirt. Fast for plastic, but also good for taking a beating in the rock gardens - \$400 / OBO. Contact Todd [tmoore991@gmail.com](mailto:tmoore991@gmail.com)

Would you like to read more about sea kayaking?  
**Subscribe to Atlantic Coastal Kayaker**

Atlantic Coastal Kayaker will bring you a 36-page issue all about sea kayaking, 8 months a year.  
(March through December)

**Special rate for RICKA members**  
**\$18 a year – a \$6.00 discount**

Send for a free sample issue.

Atlantic Coastal Kayaker  
224 Argilla Road  
Ipswich, MA 01938  
Phone: 978-356-6112 (phone and fax)  
Email: [ackayak@comcast.net](mailto:ackayak@comcast.net)  
Website: <http://www.atlanticcoastalkayaker.com>

Send your classified ads to RICKA Webmaster Cheryl Thompson, 53 Anan Wade Road, Glocester, RI 02857-2611 or [webmaster@ricka.org](mailto:webmaster@ricka.org). Include your name for membership verification. Please notify the Webmaster when your gear is sold so that the ad can be removed. Acceptance, duration and formatting of your ad are at the webmaster's and newsletter editor's discretion.



(Not a RICKA event, but we encourage all to help out)

# 2019 Big River Cleanup

**Volunteer Saturday morning  
to help clean up one of our  
favorite places in Rhode Island**

**April 27th, 8:30  
Exit 6a Park & Ride  
off Rt 95  
West Greenwich**

**free t-shirt & lunch**

**last year  
120 volunteers  
removed 5 tons  
of trash  
in 3 1/2 hours**

